



Test Report

Report No. A2250947137104010R1

Page 1 of 8

Company Name HUIZHOU BAISHIDACHEMICAL CO., LTD/SHENZHENPOLU CONDUCTIVE
shown on Report PRINTING TECHNOLOGY CO.,LTD
Address HUIZHOU CITY, HUIYANG DISTRICT, YONGHU TOWN, HONGHAI FINE
CHEMICAL BASE, PLOT F-14-1

The following sample(s) and sample information was/were submitted and identified by/on the behalf of the applicant

Sample Name 油墨
Model No. See Page 5-6
Color 黑色
Material 油墨
Sample Received Date Dec. 18, 2025
Testing Period Dec. 18, 2025 to Dec. 24, 2025

Test Conducted:

As requested by the applicant. For details refer to next page(s).



Wenjun Wang

Date

Jan. 8, 2026

Wenjun Wang
Lab Authorized Signatory

No. R200823262

Centre Testing International Group Co.,Ltd. Shunde Branch

Room 501, 902 Yongying Building, Section 2, No.8, East of Rongqi Avenue, Ronggui, Shunde District, Foshan, Guangdong, China

Test Report

Report No. A2250947137104010R1

Page 2 of 8

Executive Summary:

TEST REQUEST

GB 38507-2020 Limits of volatile organic compounds (VOCs) in printing ink

- Annex A List of prohibited solvents
- Halogenated hydrocarbon

CONCLUSION

See test result(s)

See test result(s)

***** For further details, please refer to the following page(s) *****

Test Report

Report No. A2250947137104010R1

Page 3 of 8

GB 38507-2020 Limits of volatile organic compounds (VOCs) in printing ink

▼ Annex A List of prohibited solvents

Test Method: In-house method; Test Equipment: GC-MS

Test Item(s)	Result	MDL	Unit
	010		
Ethylbenzene CAS#:100-41-4	N.D.	50	mg/kg
Methyloxirane (Propylene oxide) (MO) CAS#:75-56-9	N.D.	50	mg/kg
Styrene CAS#:100-42-5	N.D.	50	mg/kg
Benzene CAS#:71-43-2	N.D.	50	mg/kg
Isopropyl nitrite CAS#:541-42-4	N.D.	50	mg/kg
Butyl nitrite CAS#:544-16-1	N.D.	50	mg/kg
2-Ethoxyethanol CAS#:110-80-5	N.D.	50	mg/kg
2-Ethoxyethyl acetate CAS#:111-15-9	N.D.	50	mg/kg
2-Methoxyethanol CAS#:109-86-4	N.D.	50	mg/kg
2-Methoxyethyl acetate CAS#:110-49-6	N.D.	50	mg/kg
2-Nitropropane CAS#:79-46-9	N.D.	50	mg/kg
N-Methyl pyrrolidone (NMP) CAS#:872-50-4	N.D.	50	mg/kg
1,2-bis(2-methoxyethoxy) ethane CAS#:112-49-2	N.D.	50	mg/kg
Ethylene glycol dimethyl ether CAS#:110-71-4	N.D.	50	mg/kg
Ethylene glycol diethyl ether CAS#:629-14-1	N.D.	50	mg/kg
Toluene CAS#:108-88-3	N.D.	50	mg/kg
Xylene CAS#:1330-20-7	N.D.	50	mg/kg

Test Report

Report No. A2250947137104010R1

Page 4 of 8

▼ Halogenated hydrocarbon

Test Method: In-house method; Test Equipment: GC-MS

Test Item(s)	Result	MDL	Unit
	010		
Dichloromethane	N.D.	50	mg/kg
Trichloromethane	N.D.	50	mg/kg
Trichloroethylene	N.D.	50	mg/kg
Carbon tetrachloride (CCl ₄)	N.D.	50	mg/kg
Tetrachloroethylene	N.D.	50	mg/kg
1,2-Dichloroethane (DCE)	N.D.	50	mg/kg
1,1-Dichloroethane	N.D.	50	mg/kg
1,2-Dichloropropane	N.D.	50	mg/kg
1,1,1-Trichloroethane	N.D.	50	mg/kg
1,1,2-Trichloroethane	N.D.	50	mg/kg
1,2,3-trichloropropane (123TCL)	N.D.	50	mg/kg
Halogenated hydrocarbon	N.D.	--	mg/kg

Remark:

- MDL = Method Detection Limit
- N.D. = Not Detected (<MDL)
- mg/kg = ppm = parts per million
- According to the client's statement, the reasons for the multiple information in the "sample information" of this report may include (but are not limited to): supplying to different buyers, being sold to different countries or regions, former names, or mixtures of several substances.

Sample/Part Description

No.	CTI Sample ID	Description
1	010	Black liquid

Note: This testing report revised "Model No.," based on the original report of No. A2250947137104010. This testing report displaces the original one which was invalid since the date of this testing report released.

Test Report

Report No. A2250947137104010R1

Page 5 of 8

Model No.

PIC-1083B(**), PA-1083, PB-1083(**), PB-1083-5(**), PBT-1083-3, PBT-1083-3W, PBW-1083(**),
PBW-1083-3, PBW-10833(**), PD-1083, PD-1083(**), PE-1083, PE-1083(**), PE-1083-3, PET-1083,
PET-1083(**), PET-1083-3, PET-1083-3(**), PF-1083(**), PIC-1083(**), PIC-1083(**), PIC-1083-3,
PIC-1083-5(**), PIC-1083-8, PIC-1083-8(**), PIC-1083B, PIC-1083B(**), PIC-1083D, PIC-1083K(**),
PIC-1083B-5(**), PN-1083(**), PR-1083, PR-1083(**), PS-1083, PS-1083B(**), PV-1083(**), UV-1083,
PIC-1085, PIC-1085(**), PIC-1085-3, PIC-1085-5, PIC-1085-8, PIC-1085B, PIC-1085B(**), PIC-1085B-5(**),
PIC-1085D, PIC-1085K, PA-1001, PA-1001(**), PB-1001(**), PBT-1001, PBT-1001(**), PBW-1001(**),
PD-1001, PD-1001(**), PE-1001, PE-1001(**), PET-1001, PET-1001(**), PG-1001(**), PIC-1001(**),
PIC-1001-5, PIC-1001-8, PIC-1001B, PIC-1001B(**), PIR-1001, PIR-1001(**), PS-1001, PT-1001(**), PV-1001,
PV-1001(**), PW-1001(**), PM-1001(**), UV-1001(**), UV-100125C, PA-1075, PA-1075(**), PA-1075-5(**),
PB-1075(**), PB-1075-5(**), PBT-1075, PBT-1075-3, PBT-1075-3(**), PBT-1075-3W, PBW-1075(**),
PBW-1075-3, PD-1075, PD-1075(**), PD-1075-3, PD-1075-3W, PD-1075-5, PD-1075-5(**), PE-1075,
PE-1075(**), PE-1075-3, PET-1075, PET-1075(**), PET-1075-3, PG-1075, PG-1075(**), PIC-1075(**),
PIC-1075-3, PIC-1075-4, PIC-1075-5, PIC-1075-5(**), PIC-1075B(**), PIC-1075B, PIC-1075B-2,
PIC-1075D(**), PR-1075T(**), KV-1004, KV-1004(**), PB-1004(**), PBW-1004(**), PD-1004(**),
PIC-1004(**), PIR-1004(**), PR-1004, PR-1004(**), PT-1004(**), POLU-10C, POLU-10C(**), PR-10C,
PR-10C(**), PA-1035, PA-1035(**), PBT-1035, PBW-1035(**), PD-1035(**), PE-1035, PE-1035(**),
PET-1035, PG-1035(**), PIC-1035(**), PIC-1035-3, PIC-1035-4, PIC-1035-8, PIC-1035B, PIC-1035B(**),
PIC-1035B-2, PIC-1035B-3, PIR-1035(**), POLU-1035, POLU-1035(**), PR-1035, PR-1035(**), PT-1035,
PT-1035(**), PV-1035, RC-1035(**), UV-1035(**), PA-1028(**), PBW-1028(**), PD-1028(**), PG-1028(**),
PIC-1028(**), PIC-1028-3, PIC-1028-4, PIC-1028B, PIC-1028B(**), PIC-1028B-2, PIC-1028B-3, PR-1028,
PR-1028(**), PT-1028(**), PBT-1046, PBW-1046(**), PD-1046, PD-1046(**), PD-1046-2, PE-1046(**),
PET-1046, PIC-1046, PIC-1046(**), PIC-1046-4, PIC-1046-8, PIC-1046B, PIC-1046B-2, PIC-1046B-3,
POLU-1046, PR-1046, PV-1046.PBT-1048, PBW-1048(**), PD-1048(**), PE-1048, PE-1048(**), PET-1048,
PIC-1048(**), PIC-1048-3.PIC-1048-4, PIC-1048-8, PIC-1048B, PIC-1048B(**), PIR-1048(**), PN-1048(**),
POLU-1048, POLU-1048(**), PR-1048, PR-1048(**), PT-1048, PT-1048(**), PV-1048.PBT-1026, PE-1026,
PE-1026(**), PET-1026, PIC-1026(**), PIC-1026-8, PIC-1026B, PIC-1026B(**), PIC-1026B-2, PR-1026,
PR-1026, PR-1026(**), PV-1026.PA-1075, PA-1075(**), PA-1075-5(**), PB-1075(**), PB-1075-5(**),
PBT-1075, PBT-1075-3, PBT-1075-3(**), PBT-1075-3W, PBW-1075(**), PBW-1075-3, PD-1075, PD-1075(**),
PD-1075-3, PD-1075-3W, PD-1075-5, PD-1075-5(**), PE-1075, PE-1075(**), PE-1075-3, PET-1075,
PET-1075(**), PET-1075-3, PG-1075, PG-1075(**), PIC-1075(**), PIC-1075-3, PIC-1075-4, PIC-1075-5,
PIC-1075-5(**), PIC-1075B(**), PIC-1075B, PIC-1075B-2, PIC-1075D(**), PR-1075T(**).KV-1004,
KV-1004(**), PB-1004(**), PBW-1004(**), PD-1004(**), PIC-1004(**), PIR-1004(**), PR-1004, PR-1004(**),
PT-1004(**).POLU-10C, POLU-10C(**), PR-10C, PR-10C(**).PA-1035, PA-1035(**), PBT-1035,

Test Report

Report No. A2250947137104010R1

Page 6 of 8

PBW-1035(**), PD-1035(**), PE-1035, PE-1035(**), PET-1035, PG-1035(**), PIC-1035(**), PIC-1035-3, PIC-1035-4, PIC-1035-8, PIC-1035B, PIC-1035B(**), PIC-1035B-2, PIC-1035B-3, PIR-1035(**), POLU-1035, POLU-1035(**), PR-1035, PR-1035(**), PT-1035, PT-1035(**), PV-1035, RC-1035(**), UV-1035(**).PA-1028(**), PBW-1028(**), PD-1028(**), PG-1028(**) , PIC-1028(**), PIC-1028-3, PIC-1028-4, PIC-1028B, PIC-1028B(**), PIC-1028B-2, PIC-1028B-3, PR-1028, PR-1028(**), PT-1028(**).PBT-1046, PBW-1046(**), PD-1046, PD-1046(**), PD-1046-2, PE-1046(**), PET-1046, PIC-1046, PIC-1046(**), PIC-1046-4, PIC-1046-8, PIC-1046B, PIC-1046B-2, PIC-1046B-3, POLU-1046, PR-1046, PV-1046.PBT-1048, PBW-1048(**), PD-1048(**), PE-1048, PE-1048(**), PET-1048, PIC-1048(**), PIC-1048-3.PIC-1048-4, PIC-1048-8, PIC-1048B, PIC-1048B(**), PIR-1048(**), PN-1048(**), POLU-1048, POLU-1048(**), PR-1048, PR-1048(**), PT-1048, PT-1048(**), PV-1048.PBT-1026, PE-1026, PE-1026(**), PET-1026, PIC-1026(**), PIC-1026-8, PIC-1026B, PIC-1026B(**), PIC-1026B-2, PR-1026, PR-1026, PR-1026(**), PV-1026.PBT-1063(**), PBW-1063, PBW-1063(**), PD-1063(**), PE-1063(**), PET-1063, PIC-1063 (**) , PIC-1063-8, PIC-1063B, PIC-1063B(**), PIC-1063B-2, PN-1063**), POLU-1063, PR-1063, PR-1063(**), PW-1063(**), UV-1063 (**).PBT-1012, PBT-1012(**), PBW-1012(**), PD-1012(**), PE-1012, PE-1012(**), PET-1012, PIC-1012(**), PIC-1012-4, PIC-1012-8, PIC-1012B, PIC-1012B-2, PIC-1012B-3, PIR-1012(**), PL-1012, PL-1012(**), PL-1012D, PL-1012D(**), POLU-1012, PR-1012, PR-1012(**), PT-1012(**), PV-1012, PW-1012(**), UV-1012(**).PBT-1011, PD-1011, PD-1011(**), PE-1011, PE-1011(**), PET-1011, PIC-1011(**), PIC-1011-8, PIC-1011B, PIC-1011B-2, , PR-1011.PBT-1016, PBW-1016(**), PD-1016(**), PIC-1016(**), PIC-1016-10, PIC-1016-2, PIC-1016-4, PIC-1016B, PIC-1016B-2, PIC-1016B-3, PIR-1016(**), POLU-10 (**) , PR-1016, PR-1016(**), PT-1016, PT-1016(**), PV-1016, RC-1016, PBW-1050(**), PD-1050(**), PD-1050-2, PD-1050S-1, PE-1050, PE-1050(**), PET-1050, PET-1050(**), PIC-1050(**), PIC-1050-4, PIC-1050B, PIC-1050B(**), PIC-1050B-2, PIC-1050B-3, PIC-1050-10, PR-1050, PR-1050(**), PT-1050(**), PV-1050.PA-1053(**), PBT-1053, PBW-1053(**), PD-1053(**), PD-105S-1, PD-1053S-2, PE-1053, PE-1053(**), PET-1053, PET-1053(**), PIC-1053(**), PIC-1053-3, PIC-1053-4, PIC-1053-8, PIC-1053B, PIC-1053B(**), PIC-1053B-2, PIC-1053B-3, PIC-1053B-3 (**) , PIR-1053 (**) , PK-1053, PK-1053A, PK-1053(**), PM-1053(**), PN-1053(**), POLU-1053 (**) , PR-1053, PR-1053(**), PT-1053(**), PV-1053, PW-1053(**), UV-1053(**), UV-1053-5, UV-1053-6, UV-1053-7, UV-1053-8.PG-1028(**), PD-103(**), PE-103(**), PG-103(**), PIC-103(**), PT-103(**), PBT-012, PBT-012(**), PE-012, PE-012(**), PET-012, PIC-012(**), POLU-012(**), PS-012(**), PT-012(**), RC-012, YM-012, PG-1042(**), PG-1042(**), PT-1053(**), PT-1050(**), PT-1048(**), PD-1001(**), PG-1001(**), PT-1001(**), PG-1035(**), PT-1035, PT-1035(**), PG-1016(**), PT-1016, PT-1016(**), PT-1012(**), PIC-1004(**), PT-1004(**), PG-1029(**), PR-1029(**), PA-011, PBT-011, PE-011, PET-011, PIC-011(**), POLU-011(**), B0-1004, POLU-10C, POLU-10C(**), PR-10C, PR-10C(**), PT-011(**), RC-011, YM-011, PBT-012.PBT-012(**), PE-012, PE-012(**), PET-012, PET-012(**), PIC-012(**), POLU-012(**), PS-012(**), PT-012(**), RC-012, YM-012, PG-2667.HD-G(**), HD-AH(**), HD-CG(**), HD-**, P-1700(**), PD-1000, PD-1000(**), PD-2#80B(AP), PD-G(**), PET-1000(**), PG-100, PG-1000, PG-1000(**), PG-G**, PIC-1000,

Test Report

Report No. A2250947137104010R1

Page 7 of 8

PIC-1000(**), PIC-G(**), PIR-1000(**), PR-(2号 80B), PR-(G18-A), PR-1000, PR-1000(**), PR-300, PR-G(**), PW-1000(**), RA-(**), AH-S(**), P-1700(**), RA-G40, P-1300(**), PIC-1300(**), PIR 专用流平剂, ZJ-A(**), P-1200(**), P-1300(**), PIR 专用消泡剂, ZJ-B(**).P-100, P-100(**), P-1000(**).P-1400A, P-1800(**), P-200A, P-200, P-200(**), P-2000, P-2000A, P-300, P-300(**), P-500, P-500(**), P-600, P-600(**), P-700, P-718, P-**, P-800, P-800(**), P-900, P-900(**)P-1900, P-1900(**), UV-1200, UV-1000

PIR-1083(**), PICSD-1083B(**), PBT-1083, PBT-1083(**), EA-1001, PG-1001, KV-1004(**), UV-10056, UV-120728E(**), UV-130905C, UV-120202B, PL-1001(**), PL-1083(**), PR-1075W(**), PIR-1075-H(**), PR-1075(**).PR-1075-3.PR-1075-3(**).PR-1075-5(**), PR-1075-8(**), PR-1075-8T(**), PR-1075-8W(**), PR-1075D, PR-1075D(**), PR-1075B(**), PN-1075(**), PN-1075-5(**), PBW-1075-3, PBW-1075-5(**), PIR-1075(**), PIR-1075-H(**), PW-1075(**), PT-1075(**), POLU-1075, POLU-1075-3, POLU-1075-5, POLU-1075(**), RC-1075(**), PM-1075(**), PS-1075(**), KB-1075, PK-1075(**), BO-1075, PET-1075PET-1075, PT-1075(**), PK-1075(**), UV-1075(**), PN-1004(**), PA-1004(**), PET-1004(**), PIR-1004(**), PB-1004(**), PET-1004(**), ZJ-T(**), P-1500(**), P-1400(**), PB-1035, PB-1053, RR-2624, PM-1075, PM-1075(**), PD-1053S-1, PIC-130412B, PS 光油, A569, S1-12706, PIC-108(W), PIC-1083W, A301-70, S1-12624,

POLU-100606D, 606-825-60, S1-13390, S1-14032, S1-14392, kv 色膏, S1-12006, S1-**, VA 光油, VB 光油, PR-**, A301-70, B-805, RR-805, LG-810-60, 101-821-50, LG-810-60, PET 光, A569, UV-1300, PR-**,

101-802-60, 101-821-50, 202-825-60, 219-50, P-601, RC-**, BO-**, POLU-10B, POLU-783, POLU-PH(**), 302-819-50, 303-825-60, 505-825-60, A629-1, RR-4392, ZJ-T(**)

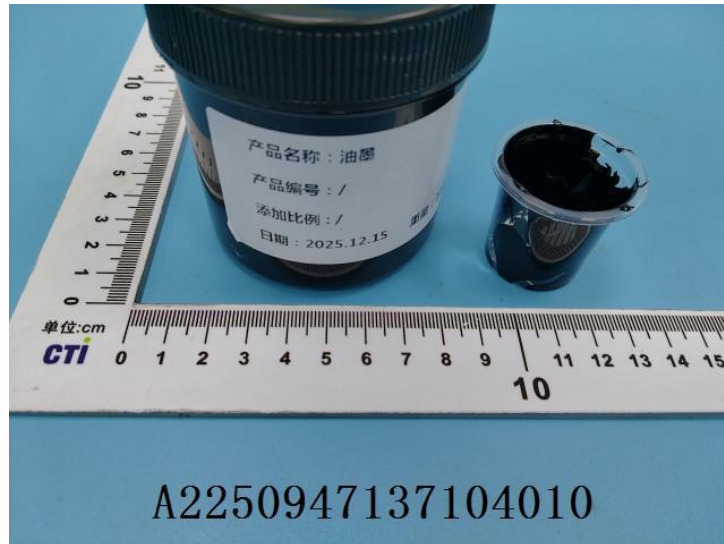
(备注: 括号内 “**” 代表我司产品流水号)

Test Report

Report No. A2250947137104010R1

Page 8 of 8

Photo(s) of the sample(s)



Statement:

1. This report is considered invalid without approved signature, special seal and the seal on the perforation;
2. The Company Name shown on Report and Address, the sample(s) and sample information was/were provided by the applicant who should be responsible for the authenticity which CTI hasn't verified;
3. The result(s) shown in this report refer(s) only to the sample(s) tested;
4. Unless otherwise stated, the decision rule for conformity reporting is based on Binary Statement for Simple Acceptance Rule (w=0) stated in ILAC-G8:09/2019 / CNAS-GL015:2022;
5. Without written approval of CTI, this report can't be reproduced except in full;
6. In case of any discrepancy between the English version and Chinese version of the reports (if generated), the Chinese version shall prevail.

*** End of Report ***