

Test Report



Report No. A2250947137102004R1

Page 1 of 6

Company Name HUIZHOU BAISHIDACHEMICAL CO., LTD/SHENZHENPOLU CONDUCTIVE
shown on Report PRINTING TECHNOLOGY CO.,LTD
Address HUIZHOU CITY, HUIYANG DISTRICT, YONGHU TOWN, HONGHAI FINE
CHEMICAL BASE, PLOT F-14-1

The following sample(s) and sample information was/were submitted and identified by/on the behalf of the applicant

Sample Name 油墨
Model No. See page 4-5
Color 黑色
Material 油墨
Sample Received Date Dec. 18, 2025
Testing Period Dec. 18, 2025 to Dec. 22, 2025

Test Requested As specified by client, to test Antimony(Sb) in the submitted sample(s).

Test Method/Test Result(s) Please refer to the following page(s).

Approved by

Wenjun Wang

Date

Jan. 8, 2026

Wenjun Wang

Lab Authorized Signatory

No. R200821030



Centre Testing International Group Co.,Ltd. Shunde Branch

Room 501, 502, Yongyings Building, Section 2, No.8, East of Rongqi Avenue, Ronggui, Shunde District, Foshan, Guangdong, China

Test Report

Report No. A2250947137102004R1

Page 2 of 6

Test Method

Tested Item(s)	Test Method	Measured Equipment(s)
Antimony(Sb)	Refer to US EPA 3050B:1996 & US EPA 6010D:2018	ICP-OES

Test Result(s)

Tested Item(s)	Result	MDL
	004	
Antimony (Sb)	N.D.	5 mg/kg

Sample/Part Description

No.	CTI Sample ID	Description
1	004	Black liquid(dry weight)

Remark: The sample(s) had been dissolved totally tested for Antimony.

The sample(s) was tested after drying for 2 hours under 105 °C.

-MDL = Method Detection Limit

-N.D. = Not Detected (<MDL)

-mg/kg = ppm = parts per million

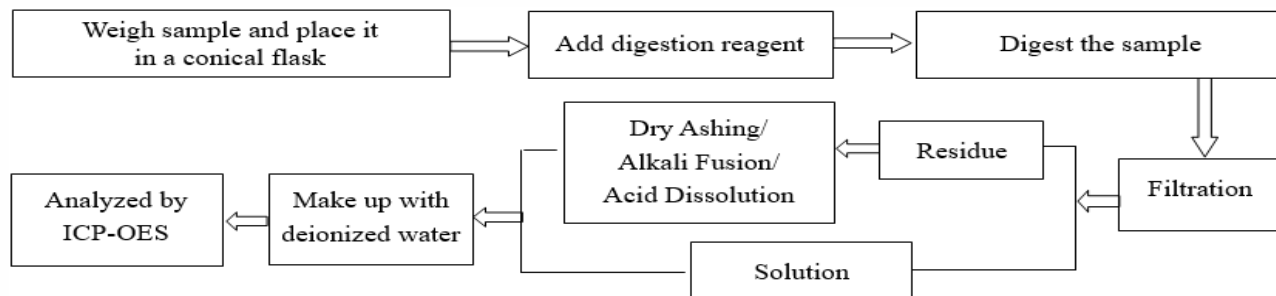
- According to the client's statement, the reasons for the multiple information in the "sample information" of this report may include (but are not limited to): supplying to different buyers, being sold to different countries or regions, former names, or mixtures of several substances.

Test Report

Report No. A2250947137102004R1

Page 3 of 6

Test Process



Test Report

Report No. A2250947137102004R1

Page 4 of 6

Model No.

PIC-1083B(**), PA-1083, PB-1083(**), PB-1083-5(**), PBT-1083-3, PBT-1083-3W, PBW-1083(**), PBW-1083-3, PBW-10833(**), PD-1083, PD-1083(**), PE-1083, PE-1083(**), PE-1083-3, PET-1083, PET-1083(**), PET-1083-3, PET-1083-3(**), PF-1083(**), PIC-1083(**), PIC-1083(**), PIC-1083-3, PIC-1083-5(**), PIC-1083-8, PIC-1083-8(**), PIC-1083B, PIC-1083B(**), PIC-1083D, PIC-1083K(**), PIC-1083B-5(**), PN-1083(**), PR-1083, PR-1083(**), PS-1083, PS-1083B(**), PV-1083(**), UV-1083, PIC-1085, PIC-1085(**), PIC-1085-3, PIC-1085-5, PIC-1085-8, PIC-1085B, PIC-1085B(**), PIC-1085B-5(**), PIC-1085D, PIC-1085K, PA-1001, PA-1001(**), PB-1001(**), PBT-1001, PBT-1001(**), PBW-1001(**), PD-1001, PD-1001(**), PE-1001, PE-1001(**), PET-1001, PET-1001(**), PG-1001(**), PIC-1001(**), PIC-1001-5, PIC-1001-8, PIC-1001B, PIC-1001B(**), PIR-1001, PIR-1001(**), PS-1001, PT-1001(**), PV-1001, PV-1001(**), PW-1001(**), PM-1001(**), UV-1001(**), UV-100125C, PA-1075, PA-1075(**), PA-1075-5(**), PB-1075(**), PB-1075-5(**), PBT-1075, PBT-1075-3, PBT-1075-3(**), PBT-1075-3W, PBW-1075(**), PBW-1075-3, PD-1075, PD-1075(**), PD-1075-3, PD-1075-3W, PD-1075-5, PD-1075-5(**), PE-1075, PE-1075(**), PE-1075-3, PET-1075, PET-1075(**), PET-1075-3, PG-1075, PG-1075(**), PIC-1075(**), PIC-1075-3, PIC-1075-4, PIC-1075-5, PIC-1075-5(**), PIC-1075B(**), PIC-1075B, PIC-1075B-2, PIC-1075D(**), PR-1075T(**), KV-1004, KV-1004(**), PB-1004(**), PBW-1004(**), PD-1004(**), PIC-1004(**), PIR-1004(**), PR-1004, PR-1004(**), PT-1004(**), POLU-10C, POLU-10C(**), PR-10C, PR-10C(**), PA-1035, PA-1035(**), PBT-1035, PBW-1035(**), PD-1035(**), PE-1035, PE-1035(**), PET-1035, PG-1035(**), PIC-1035(**), PIC-1035-3, PIC-1035-4, PIC-1035-8, PIC-1035B, PIC-1035B(**), PIC-1035B-2, PIC-1035B-3, PIR-1035(**), POLU-1035, POLU-1035(**), PR-1035, PR-1035(**), PT-1035, PT-1035(**), PV-1035, RC-1035(**), UV-1035(**), PA-1028(**), PBW-1028(**), PD-1028(**), PG-1028(**), PIC-1028(**), PIC-1028-3, PIC-1028-4, PIC-1028B, PIC-1028B(**), PIC-1028B-2, PIC-1028B-3, PR-1028, PR-1028(**), PT-1028(**), PBT-1046, PBW-1046(**), PD-1046, PD-1046(**), PD-1046-2, PE-1046(**), PET-1046, PIC-1046, PIC-1046(**), PIC-1046-4, PIC-1046-8, PIC-1046B, PIC-1046B-2, PIC-1046B-3, POLU-1046, PR-1046, PV-1046.PBT-1048, PBW-1048(**), PD-1048(**), PE-1048, PE-1048(**), PET-1048, PIC-1048(**), PIC-1048-3.PIC-1048-4, PIC-1048-8, PIC-1048B, PIC-1048B(**), PIR-1048(**), PN-1048(**), POLU-1048, POLU-1048(**), PR-1048, PR-1048(**), PT-1048, PT-1048(**), PV-1048.PBT-1026, PE-1026, PE-1026(**), PET-1026, PIC-1026(**), PIC-1026-8, PIC-1026B, PIC-1026B(**), PIC-1026B-2, PR-1026, PR-1026, PR-1026(**), PV-1026.PA-1075, PA-1075(**), PA-1075-5(**), PB-1075(**), PB-1075-5(**), PBT-1075, PBT-1075-3, PBT-1075-3(**), PBT-1075-3W, PBW-1075(**), PBW-1075-3, PD-1075, PD-1075(**), PD-1075-3, PD-1075-3W, PD-1075-5, PD-1075-5(**), PE-1075, PE-1075(**), PE-1075-3, PET-1075, PET-1075(**), PET-1075-3, PG-1075, PG-1075(**), PIC-1075(**), PIC-1075-3, PIC-1075-4, PIC-1075-5, PIC-1075-5(**), PIC-1075B(**), PIC-1075B, PIC-1075B-2, PIC-1075D(**), PR-1075T(**).KV-1004, KV-1004(**), PB-1004(**), PBW-1004(**), PD-1004(**), PIC-1004(**), PIR-1004(**), PR-1004, PR-1004(**), PT-1004(**).POLU-10C, POLU-10C(**), PR-10C, PR-10C(**).PA-1035, PA-1035(**), PBT-1035, PBW-1035(**), PD-1035(**), PE-1035, PE-1035(**), PET-1035, PG-1035(**), PIC-1035(**), PIC-1035-3, PIC-1035-4, PIC-1035-8, PIC-1035B, PIC-1035B(**), PIC-1035B-2, PIC-1035B-3, PIR-1035(**), POLU-1035, POLU-1035(**), PR-1035, PR-1035(**), PT-1035, PT-1035(**), PV-1035, RC-1035(**), UV-1035(**).PA-1028(**), PBW-1028(**), PD-1028(**), PG-1028(**), PIC-1028(**), PIC-1028-3, PIC-1028-4, PIC-1028B, PIC-1028B(**), PIC-1028B-2, PIC-1028B-3, PR-1028, PR-1028(**), PT-1028(**).PBT-1046, PBW-1046(**), PD-1046, PD-1046(**), PD-1046-2, PE-1046(**), PET-1046, PIC-1046, PIC-1046(**), PIC-1046-4, PIC-1046-8, PIC-1046B, PIC-1046B-2, PIC-1046B-3, POLU-1046, PR-1046, PV-1046.PBT-1048, PBW-1048(**), PD-1048(**), PE-1048, PE-1048(**), PET-1048, PIC-1048(**), PIC-1048-3.PIC-1048-4, PIC-1048-8, PIC-1048B, PIC-1048B(**), PIR-1048(**), PN-1048(**), POLU-1048, POLU-1048(**), PR-1048, PR-1048(**), PT-1048, PT-1048(**), PV-1048.PBT-1026, PE-1026, PE-1026(**), PET-1026, PIC-1026(**), PIC-1026-8, PIC-1026B, PIC-1026B(**), PIC-1026B-2, PR-1026, PR-1026, PR-1026(**), PV-1026.PBT-1063(**), PBW-1063, PBW-1063(**), PD-1063(**), PE-1063(**), PET-1063, PIC-1063 (**), PIC-1063-8, PIC-1063B, PIC-1063B(**),

Test Report

Report No. A2250947137102004R1

Page 5 of 6

PIC-1063B-2, PN-1063**, POLU-1063, PR-1063, PR-1063(**), PW-1063(**), UV-1063 (**).PBT-1012, PBT-1012(**), PBW-1012(**), PD-1012(**), PE-1012, PE-1012(**), PET-1012, PIC-1012(**), PIC-1012-4, PIC-1012-8, PIC-1012B, PIC-1012B-2, PIC-1012B-3, PIR-1012(**), PL-1012, PL-1012(**), PL-1012D, PL-1012D(**), POLU-1012, PR-1012, PR-1012(**), PT-1012(**), PV-1012, PW-1012(**), UV-1012(**).PBT-1011, PD-1011, PD-1011(**), PE-1011, PE-1011(**), PET-1011, PIC-1011(**), PIC-1011-8, PIC-1011B, PIC-1011B-2, , PR-1011.PBT-1016, PBW-1016(**), PD-1016(**), PIC-1016(**), PIC-1016-10, PIC-1016-2, PIC-1016-4, PIC-1016B, PIC-1016B-2, PIC-1016B-3, PIR-1016(**), POLU-10 (**), PR-1016, PR-1016(**), PT-1016, PT-1016(**), PV-1016, RC-1016, PBW-1050(**), PD-1050(**), PD-1050-2, PD-1050S-1, PE-1050, PE-1050(**), PET-1050, PET-1050(**), PIC-1050(**), PIC-1050-4, PIC-1050B, PIC-1050B(**), PIC-1050B-2, PIC-1050B-3, PIC-1050-10, PR-1050, PR-1050(**), PT-1050(**), PV-1050.PA-1053(**), PBT-1053, PBW-1053(**), PD-1053(**), PD-1053S-1, PD-1053S-2, PE-1053, PE-1053(**), PET-1053, PET-1053(**), PIC-1053(**), PIC-1053-3, PIC-1053-4, PIC-1053-8, PIC-1053B, PIC-1053B(**), PIC-1053B-2, PIC-1053B-3, PIC-1053B-3 (**), PIR-1053 (**), PK-1053, PK-1053A, PK-1053(**), PM-1053(**), PN-1053(**), POLU-1053(**), PR-1053, PR-1053(**), PT-1053(**), PV-1053, PW-1053(**), UV-1053(**), UV-1053-5, UV-1053-6, UV-1053-7, UV-1053-8.PG-1028(**), PD-103(**), PE-103(**), PG-103(**), PIC-103(**), PT-103(**), PBT-012, PBT-012(**), PE-012, PE-012(**), PET-012, PIC-012(**), POLU-012(**), PS-012(**), PT-012(**), RC-012, YM-012, PG-1042(**), PG-1042(**), PT-1053(**), PT-1050(**), PT-1048(**), PD-1001(**), PG-1001(**), PT-1001(**), PG-1035(**), PT-1035, PT-1035(**), PG-1016(**), PT-1016, PT-1016(**), PT-1012(**), PIC-1004(**), PT-1004(**), PG-1029(**), PR-1029(**), PA-011, PBT-011, PE-011, PET-011, PIC-011(**), POLU-011(**), B0-1004, POLU-10C, POLU-10C(**), PR-10C, PR-10C(**), PT-011(**), RC-011, YM-011, PBT-012.PBT-012(**), PE-012, PE-012(**), PET-012, PET-012(**), PIC-012(**), POLU-012(**), PS-012(**), PT-012(**), RC-012, YM-012, PG-2667.HD-G(**), HD-AH(**), HD-CG(**), HD-**, P-1700(**), PD-1000, PD-1000(**), PD-2#80B(AP), PD-G(**), PET-1000(**), PG-100, PG-1000, PG-1000(**), PG-G**, PIC-1000, PIC-1000(**), PIC-G(**), PIR-1000(**), PR-(2 号 80B), PR-(G18-A), PR-1000, PR-1000(**), PR-300, PR-G(**), PW-1000(**), RA-(**), AH-S(**), P-1700(**), RA-G40, P-1300(**), PIC-1300(**), PIR 专用流平剂, ZJ-A(**), P-1200(**), P-1300(**), PIR 专用消泡剂, ZJ-B(**).P-100, P-100(**), P-1000(**).P-1400A, P-1800(**), P-200A, P-200, P-200(**), P-2000, P-2000A, P-300, P-300(**), P-500, P-500(**), P-600, P-600(**), P-700, P-718, P-**, P-800, P-800(**), P-900, P-900(**)P-1900, P-1900(**), UV-1200, UV-1000

(备注: 括号内 “**” 代表我司产品流水号)

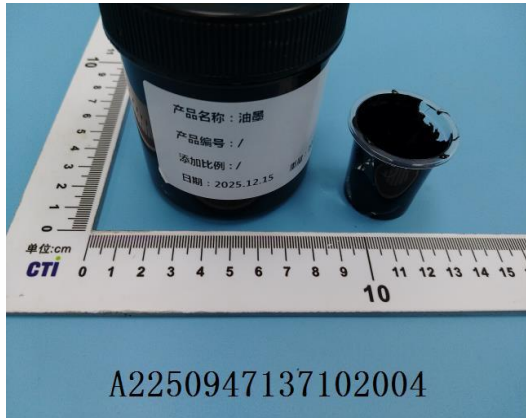
Test Report

Report No. A2250947137102004R1

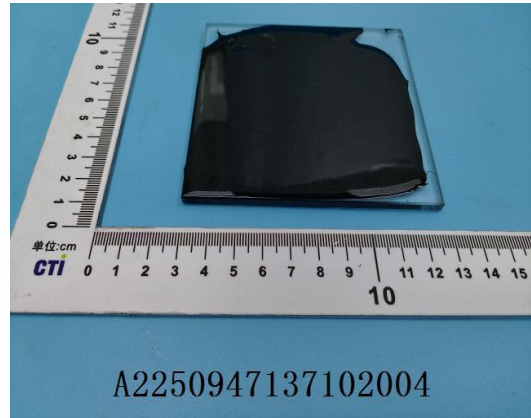
Page 6 of 6

Photo(s) of the sample(s)

Before drying



After drying



Statement:

1. This report is considered invalid without approved signature, special seal and the seal on the perforation;
2. The Company Name shown on Report and Address, the sample(s) and sample information was/were provided by the applicant who should be responsible for the authenticity which CTI hasn't verified;
3. The result(s) shown in this report refer(s) only to the sample(s) tested;
4. Unless otherwise stated, the decision rule for conformity reporting is based on Binary Statement for Simple Acceptance Rule ($w=0$) stated in ILAC-G8:09/2019 / CNAS-GL015:2022;
5. Without written approval of CTI, this report can't be reproduced except in full;
6. In case of any discrepancy between the English version and Chinese version of the reports (if generated), the Chinese version shall prevail.

*** End of Report ***