



Test Report

Report No. A2250947137102001R1

Page 1 of 10

Company Name HUIZHOU BAISHIDACHEMICAL CO., LTD/SHENZHENPOLU CONDUCTIVE
shown on Report PRINTING TECHNOLOGY CO.,LTD
Address HUIZHOU CITY, HUIYANG DISTRICT, YONGHU TOWN, HONGHAI FINE
CHEMICAL BASE, PLOT F-14-1

The following sample(s) and sample information was/were submitted and identified by/on the behalf of the applicant

Sample Name 油墨
Model No. See page 6-7
Color 黑色
Material 油墨
Sample Received Date Dec. 18, 2025
Testing Period Dec. 18, 2025 to Dec. 22, 2025

Test Requested As specified by client, to test Lead (Pb), Cadmium (Cd), Mercury (Hg), Hexavalent Chromium (Cr(VI)), Polybrominated Biphenyls (PBBs), Polybrominated Diphenyl Ethers (PBDEs), Phthalates (DBP, BBP, DEHP, DIBP) in the submitted sample(s).

Test Method/Test Result(s) Please refer to the following page(s).

Conclusion

Tested Sample	According to standard/directive	Result
Submitted Sample	RoHS Directive 2011/65/EU with amendment (EU) 2015/863	PASS

PASS means that the results shown on the report comply with the limits set by RoHS Directive 2011/65/EU with amendment (EU) 2015/863.



Wenjun Wang

Approved by

Date

Jan. 8, 2026

Wenjun Wang
Authorized Signatory

No. R200821030

Centre Testing International Group Co.,Ltd. Shunde Branch

Room:501, 902, Songying Building, Section 2, No.8, East of Rongqi Avenue, Ronggui, Shunde District, Foshan, Guangdong, China

Test Report

Report No. A2250947137102001R1

Page 2 of 10

Test Method

Tested Item(s)	Test Method	Measured Equipment(s)
Lead (Pb)	IEC 62321-5:2013	ICP-OES
Cadmium (Cd)	IEC 62321-5:2013	ICP-OES
Mercury (Hg)	IEC 62321-4:2013+AMD1:2017 CSV	ICP-OES
Hexavalent Chromium (Cr(VI))	IEC 62321-7-2:2017 and/or determination of Total Chromium by IEC 62321-5:2013	UV-Vis/ICP-OES
Polybrominated Biphenyls (PBBs)	IEC 62321-12:2023	GC-MS
Polybrominated Diphenyl Ethers (PBDEs)	IEC 62321-12:2023	GC-MS
Phthalates (DBP, BBP, DEHP, DIBP)	IEC 62321-12:2023	GC-MS

Test Result(s)

Tested Item(s)	Result	MDL	Limit
	001		
Lead (Pb)	N.D.	2 mg/kg	1000 mg/kg
Cadmium (Cd)	N.D.	2 mg/kg	100 mg/kg
Mercury (Hg)	N.D.	2 mg/kg	1000 mg/kg
Hexavalent Chromium (Cr(VI))	N.D.	8 mg/kg	1000 mg/kg

Tested Item(s)	Result	MDL	Limit
	001		
Polybrominated Biphenyls (PBBs)			
Monobromobiphenyl	N.D.	25 mg/kg	1000 mg/kg
Dibromobiphenyl	N.D.	25 mg/kg	
Tribromobiphenyl	N.D.	25 mg/kg	
Tetrabromobiphenyl	N.D.	25 mg/kg	
Pentabromobiphenyl	N.D.	25 mg/kg	
Hexabromobiphenyl	N.D.	25 mg/kg	
Heptabromobiphenyl	N.D.	25 mg/kg	
Octabromobiphenyl	N.D.	25 mg/kg	
Nonabromobiphenyl	N.D.	25 mg/kg	
Decabromobiphenyl	N.D.	25 mg/kg	

Test Report

Report No. A2250947137102001R1

Page 3 of 10

Tested Item(s)	Result	MDL	Limit
	001		
Polybrominated Diphenyl Ethers (PBDEs)			
Monobromodiphenyl ether	N.D.	25 mg/kg	1000 mg/kg
Dibromodiphenyl ether	N.D.	25 mg/kg	
Tribromodiphenyl ether	N.D.	25 mg/kg	
Tetrabromodiphenyl ether	N.D.	25 mg/kg	
Pentabromodiphenyl ether	N.D.	25 mg/kg	
Hexabromodiphenyl ether	N.D.	25 mg/kg	
Heptabromodiphenyl ether	N.D.	25 mg/kg	
Octabromodiphenyl ether	N.D.	25 mg/kg	
Nonabromodiphenyl ether	N.D.	25 mg/kg	
Decabromodiphenyl ether	N.D.	25 mg/kg	

Tested Item(s)	Result	MDL	Limit
	001		
Phthalates (DBP, BBP, DEHP, DIBP)			
Dibutyl phthalate (DBP) CAS#:84-74-2	N.D.	50 mg/kg	1000 mg/kg
Butyl benzyl phthalate (BBP) CAS#:85-68-7	N.D.	50 mg/kg	1000 mg/kg
Di-(2-ethylhexyl) phthalate (DEHP) CAS#:117-81-7	N.D.	50 mg/kg	1000 mg/kg
Diisobutyl phthalate (DIBP) CAS#:84-69-5	N.D.	50 mg/kg	1000 mg/kg

Test Report

Report No. A2250947137102001R1

Page 4 of 10

Sample/Part Description

No.	CTI Sample ID	Description
1	001	Black liquid(dry weight)

Remark: The sample(s) had been dissolved totally tested for Lead, Cadmium, Mercury.**The sample(s) was tested after drying for 2 hours under 105°C.**

-MDL = Method Detection Limit

-N.D. = Not Detected (<MDL)

-mg/kg = ppm = parts per million

-1000 mg/kg = 0.1%

- According to the client's statement, the reasons for the multiple information in the "sample information" of this report may include (but are not limited to): supplying to different buyers, being sold to different countries or regions, former names, or mixtures of several substances.

Note: This testing report revised "Model No.," based on the original report of No. A2250947137102001. This testing report displaces the original one which was invalid since the date of this testing report released.

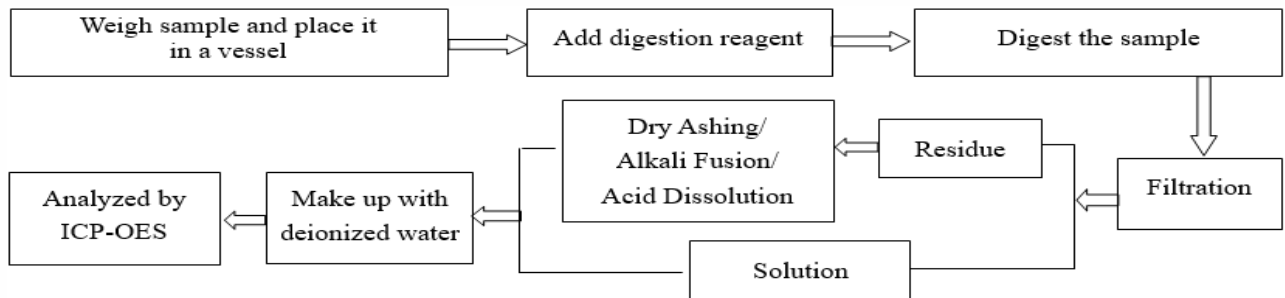
Test Report

Report No. A2250947137102001R1

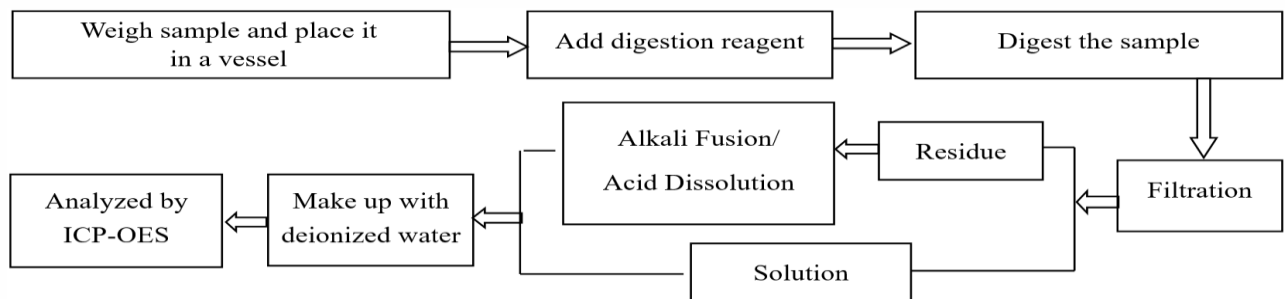
Page 5 of 10

Test Process

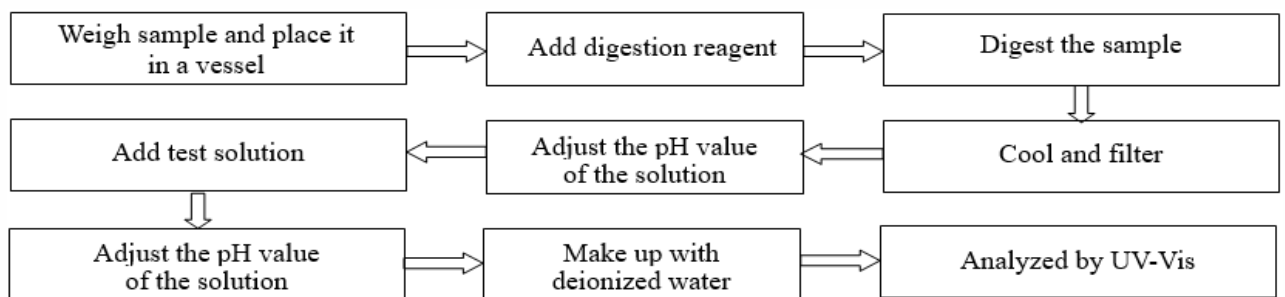
1. Lead (Pb), Cadmium (Cd), Chromium(Cr)



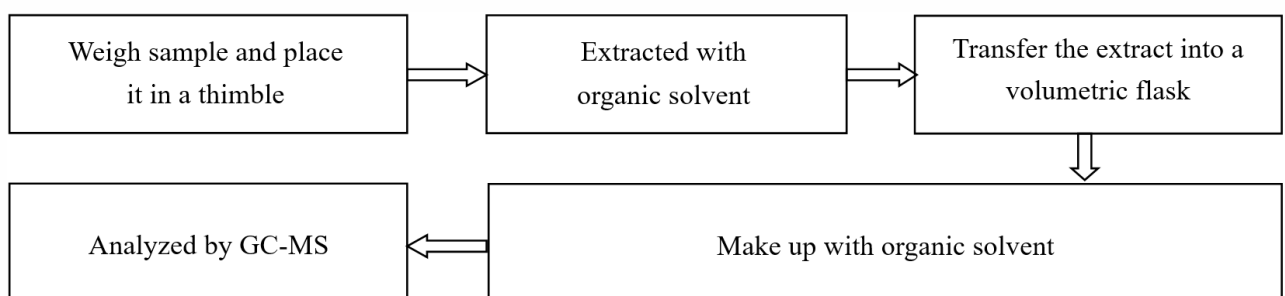
2. Mercury (Hg)



3. Hexavalent Chromium (Cr(VI))



4. Polybrominated Biphenyls (PBBs), Polybrominated Diphenyl Ethers (PBDEs)

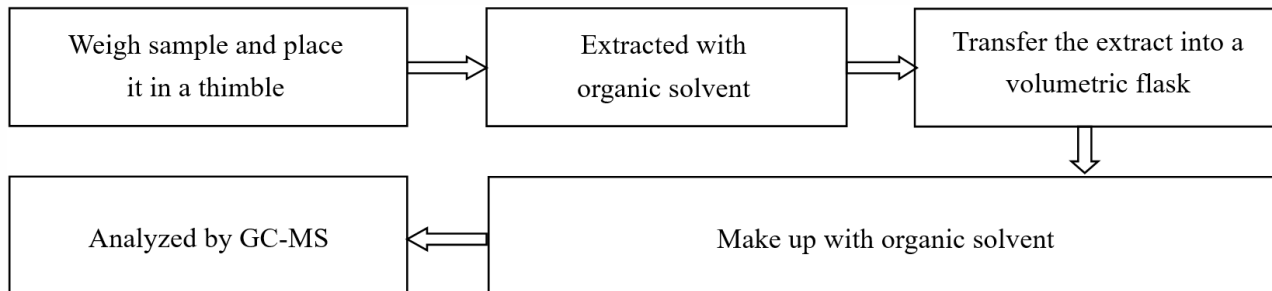


Test Report

Report No. A2250947137102001R1

Page 6 of 10

5. Phthalates (DBP, BBP, DEHP, DIBP)



Test Report

Report No. A2250947137102001R1

Page 7 of 10

Model No.:

PIC-1083B(**), PA-1083, PB-1083(**), PB-1083-5(**), PBT-1083-3, PBT-1083-3W, PBW-1083(**), PBW-1083-3, PBW-10833(**), PD-1083, PD-1083(**), PE-1083, PE-1083(**), PE-1083-3, PET-1083, PET-1083(**), PET-1083-3, PET-1083-3(**), PF-1083(**), PIC-1083(**), PIC-1083(**), PIC-1083-3, PIC-1083-5(**), PIC-1083-8, PIC-1083-8(**), PIC-1083B, PIC-1083B(**), PIC-1083D, PIC-1083K(**), PIC-1083B-5(**), PN-1083(**), PR-1083, PR-1083(**), PS-1083, PS-1083B(**), PV-1083(**), UV-1083, PIC-1085, PIC-1085(**), PIC-1085-3, PIC-1085-5, PIC-1085-8, PIC-1085B, PIC-1085B(**), PIC-1085B-5(**), PIC-1085D, PIC-1085K, PA-1001, PA-1001(**), PB-1001(**), PBT-1001, PBT-1001(**), PBW-1001(**), PD-1001, PD-1001(**), PE-1001, PE-1001(**), PET-1001, PET-1001(**), PG-1001(**), PIC-1001(**), PIC-1001-5, PIC-1001-8, PIC-1001B, PIC-1001B(**), PIR-1001, PIR-1001(**), PS-1001, PT-1001(**), PV-1001, PV-1001(**), PW-1001(**), PM-1001(**), UV-1001(**), UV-100125C, PA-1075, PA-1075(**), PA-1075-5(**), PB-1075(**), PB-1075-5(**), PBT-1075, PBT-1075-3, PBT-1075-3(**), PBT-1075-3W, PBW-1075(**), PBW-1075-3, PD-1075, PD-1075(**), PD-1075-3, PD-1075-3W, PD-1075-5, PD-1075-5(**), PE-1075, PE-1075(**), PE-1075-3, PET-1075, PET-1075(**), PET-1075-3, PG-1075, PG-1075(**), PIC-1075(**), PIC-1075-3, PIC-1075-4, PIC-1075-5, PIC-1075-5(**), PIC-1075B(**), PIC-1075B, PIC-1075B-2, PIC-1075D(**), PR-1075T(**), KV-1004, KV-1004(**), PB-1004(**), PBW-1004(**), PD-1004(**), PIC-1004(**), PIR-1004(**), PR-1004, PR-1004(**), PT-1004(**), POLU-10C, POLU-10C(**), PR-10C, PR-10C(**), PA-1035, PA-1035(**), PBT-1035, PBW-1035(**), PD-1035(**), PE-1035, PE-1035(**), PET-1035, PG-1035(**), PIC-1035(**), PIC-1035-3, PIC-1035-4, PIC-1035-8, PIC-1035B, PIC-1035B(**), PIC-1035B-2, PIC-1035B-3, PIR-1035(**), POLU-1035, POLU-1035(**), PR-1035, PR-1035(**), PT-1035, PT-1035(**), PV-1035, RC-1035(**), UV-1035(**), PA-1028(**), PBW-1028(**), PD-1028(**), PG-1028(**), PIC-1028(**), PIC-1028-3, PIC-1028-4, PIC-1028B, PIC-1028B(**), PIC-1028B-2, PIC-1028B-3, PR-1028, PR-1028(**), PT-1028(**), PBT-1046, PBW-1046(**), PD-1046, PD-1046(**), PD-1046-2, PE-1046(**), PET-1046, PIC-1046, PIC-1046(**), PIC-1046-4, PIC-1046-8, PIC-1046B, PIC-1046B-2, PIC-1046B-3, POLU-1046, PR-1046, PV-1046.PBT-1048, PBW-1048(**), PD-1048(**), PE-1048, PE-1048(**), PET-1048, PIC-1048(**), PIC-1048-3.PIC-1048-4, PIC-1048-8, PIC-1048B, PIC-1048B(**), PIR-1048(**), PN-1048(**), POLU-1048, POLU-1048(**), PR-1048, PR-1048(**), PT-1048, PT-1048(**), PV-1048.PBT-1026, PE-1026, PE-1026(**), PET-1026, PIC-1026(**), PIC-1026-8, PIC-1026B, PIC-1026B(**), PIC-1026B-2, PR-1026, PR-1026, PR-1026(**), PV-1026.PA-1075, PA-1075(**), PA-1075-5(**), PB-1075(**), PB-1075-5(**), PBT-1075, PBT-1075-3, PBT-1075-3(**), PBT-1075-3W, PBW-1075(**), PBW-1075-3, PD-1075, PD-1075(**), PD-1075-3, PD-1075-3W, PD-1075-5, PD-1075-5(**), PE-1075, PE-1075(**), PE-1075-3, PET-1075, PET-1075(**), PET-1075-3, PG-1075, PG-1075(**), PIC-1075(**), PIC-1075-3, PIC-1075-4, PIC-1075-5, PIC-1075-5(**), PIC-1075B(**), PIC-1075B, PIC-1075B-2, PIC-1075D(**), PR-1075T(**).KV-1004, KV-1004(**), PB-1004(**), PBW-1004(**), PD-1004(**), PIC-1004(**), PIR-1004(**), PR-1004, PR-1004(**), PT-1004(**).POLU-10C, POLU-10C(**), PR-10C, PR-10C(**).PA-1035, PA-1035(**), PBT-1035, PBW-1035(**), PD-1035(**), PE-1035, PE-1035(**), PET-1035, PG-1035(**), PIC-1035(**), PIC-1035-3, PIC-1035-4, PIC-1035-8, PIC-1035B, PIC-1035B(**), PIC-1035B-2, PIC-1035B-3, PIR-1035(**), POLU-1035, POLU-1035(**), PR-1035, PR-1035(**), PT-1035, PT-1035(**), PV-1035, RC-1035(**), UV-1035(**).PA-1028(**), PBW-1028(**), PD-1028(**), PG-1028(**), PIC-1028(**), PIC-1028-3, PIC-1028-4, PIC-1028B, PIC-1028B(**), PIC-1028B-2, PIC-1028B-3, PR-1028, PR-1028(**),

Test Report

Report No. A2250947137102001R1

Page 8 of 10

PT-1028(**).PBT-1046, PBW-1046(**), PD-1046, PD-1046(**), PD-1046-2, PE-1046(**), PET-1046, PIC-1046, PIC-1046(**), PIC-1046-4, PIC-1046-8, PIC-1046B, PIC-1046B-2, PIC-1046B-3, POLU-1046, PR-1046, PV-1046.PBT-1048, PBW-1048(**), PD-1048(**), PE-1048, PE-1048(**), PET-1048, PIC-1048(**), PIC-1048-3.PIC-1048-4, PIC-1048-8, PIC-1048B, PIC-1048B(**), PIR-1048(**), PN-1048(**), POLU-1048, POLU-1048(**), PR-1048, PR-1048(**), PT-1048, PT-1048(**), PV-1048.PBT-1026, PE-1026, PE-1026(**), PET-1026, PIC-1026(**), PIC-1026-8, PIC-1026B, PIC-1026B(**), PIC-1026B-2, PR-1026, PR-1026, PR-1026(**), PV-1026.PBT-1063(**), PBW-1063, PBW-1063(**), PD-1063(**), PE-1063(**), PET-1063, PIC-1063 (**), PIC-1063-8, PIC-1063B, PIC-1063B(**), PIC-1063B-2, PN-1063(**), POLU-1063, PR-1063, PR-1063(**), PW-1063(**), UV-1063 (**).PBT-1012, PBT-1012(**), PBW-1012(**), PD-1012(**), PE-1012, PE-1012(**), PET-1012, PIC-1012(**), PIC-1012-4, PIC-1012-8, PIC-1012B, PIC-1012B-2, PIC-1012B-3, PIR-1012(**), PL-1012, PL-1012(**), PL-1012D, PL-1012D(**), POLU-1012, PR-1012, PR-1012(**), PT-1012(**), PV-1012, PW-1012(**), UV-1012(**).PBT-1011, PD-1011, PD-1011(**), PE-1011, PE-1011(**), PET-1011, PIC-1011(**), PIC-1011-8, PIC-1011B, PIC-1011B-2, , PR-1011.PBT-1016, PBW-1016(**), PD-1016(**), PIC-1016(**), PIC-1016-10, PIC-1016-2, PIC-1016-4, PIC-1016B, PIC-1016B-2, PIC-1016B-3, PIR-1016(**), POLU-10 (**), PR-1016, PR-1016(**), PT-1016, PT-1016(**), PV-1016, RC-1016, PBW-1050(**), PD-1050(**), PD-1050-2, PD-1050S-1, PE-1050, PE-1050(**), PET-1050, PET-1050(**), PIC-1050(**), PIC-1050-4, PIC-1050B, PIC-1050B(**), PIC-1050B-2, PIC-1050B-3, PIC-1050-10, PR-1050, PR-1050(**), PT-1050(**), PV-1050.PA-1053(**), PBT-1053, PBW-1053(**), PD-1053(**), PD-105S-1, PD-1053S-2, PE-1053, PE-1053(**), PET-1053, PET-1053(**), PIC-1053(**), PIC-1053-3, PIC-1053-4, PIC-1053-8, PIC-1053B, PIC-1053B(**), PIC-1053B-2, PIC-1053B-3, PIC-1053B-3 (**), PIR-1053 (**), PK-1053, PK-1053A, PK-1053(**), PM-1053(**), PN-1053(**), POLU-1053 (**), PR-1053, PR-1053(**), PT-1053(**), PV-1053, PW-1053(**), UV-1053(**), UV-1053-5, UV-1053-6, UV-1053-7, UV-1053-8.PG-1028(**), PD-103(**), PE-103(**), PG-103(**), PIC-103(**), PT-103(**), PBT-012, PBT-012(**), PE-012, PE-012(**), PET-012, PIC-012(**), POLU-012(**), PS-012(**), PT-012(**), RC-012, YM-012, PG-1042(**), PG-1042(**), PT-1053(**), PT-1050(**), PT-1048(**), PD-1001(**), PG-1001(**), PT-1001(**), PG-1035(**), PT-1035, PT-1035(**), PG-1016(**), PT-1016, PT-1016(**), PT-1012(**), PIC-1004(**), PT-1004(**), PG-1029(**), PR-1029(**), PA-011, PBT-011, PE-011, PET-011, PIC-011(**), POLU-011(**), B0-1004, POLU-10C, POLU-10C(**), PR-10C, PR-10C(**), PT-011(**), RC-011, YM-011, PBT-012.PBT-012(**), PE-012, PE-012(**), PET-012, PET-012(**), PIC-012(**), POLU-012(**), PS-012(**), PT-012(**), RC-012, YM-012, PG-2667.HD-G(**), HD-AH(**), HD-CG(**), HD-**, P-1700(**), PD-1000, PD-1000(**), PD-2#80B(AP), PD-G(**), PET-1000(**), PG-100, PG-1000, PG-1000(**), PG-G**, PIC-1000, PIC-1000(**), PIC-G(**), PIR-1000(**), PR-(2号80B), PR-(G18-A), PR-1000, PR-1000(**), PR-300, PR-G(**), PW-1000(**), RA-(**), AH-S(**), P-1700(**), RA-G40, P-1300(**), PIC-1300(**), PIR 专用流平剂, ZJ-A(**), P-1200(**), P-1300(**), PIR 专用消泡剂, ZJ-B(**).P-100, P-100(**), P-1000(**).P-1400A, P-1800(**), P-200A, P-200, P-200(**), P-2000, P-2000A, P-300, P-300(**), P-500, P-500(**), P-600, P-600(**), P-700, P-718, P-**, P-800, P-800(**), P-900, P-900(**).P-1900, P-1900(**), UV-1200, UV-1000

PIR-1083(**), PICSD-1083B(**), PBT-1083, PBT-1083(**), EA-1001, PG-1001, KV-1004(**), UV-10056, UV-120728E(**), UV-130905C, UV-120202B, PL-1001(**), PL-1083(**), PR-1075W(**), PIR-1075-H(**), PR-1075(**).PR-1075-3.PR-1075-3(**).PR-1075-5(**), PR-1075-8(**), PR-1075-8T(**), PR-1075-8W(**), PR-1075D, PR-1075D(**), PR-1075B(**), PN-1075(**), PN-1075-5(**), PBW-1075-3, PBW-1075-5(**),

Test Report

Report No. A2250947137102001R1

Page 9 of 10

PIR-1075(**), PIR-1075-H(**), PW-1075(**), PT-1075(**), POLU-1075, POLU-1075-3, POLU-1075-5, POLU-1075(**), RC-1075(**), PM-1075(**), PS-1075(**), KB-1075, PK-1075(**), BO-1075, PET-1075, PET-1075, PT-1075(**), PK-1075(**), UV-1075(**), PN-1004(**), PA-1004(**), PET-1004(**), PIR-1004(**), PB-1004(**), PET-1004(**), ZJ-T(**), P-1500(**), P-1400(**), PB-1035, PB-1053, RR-2624, PM-1075, PM-1075(**), PD-1053S-1, PIC-130412B, PS 光油, A569, S1-12706, PIC-108(W), PIC-1083W, A301-70, S1-12624, POLU-100606D, 606-825-60, S1-13390, S1-14032, S1-14392, kv 色膏, S1-12006, S1-**, VA 光油, VB 光油, PR-**, A301-70, B-805, RR-805, LG-810-60, 101-821-50, LG-810-60, PET 光, A569, UV-1300, PR-**, 101-802-60, 101-821-50, 202-825-60, 219-50, P-601, RC-**, BO-**, POLU-10B, POLU-783, POLU-PH(**), 302-819-50, 303-825-60, 505-825-60, A629-1, RR-4392, ZJ-T(**)

(备注: 括号内 “**” 代表我司产品流水号)

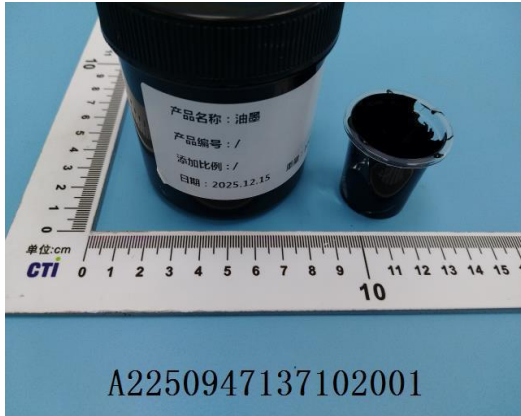
Test Report

Report No. A2250947137102001R1

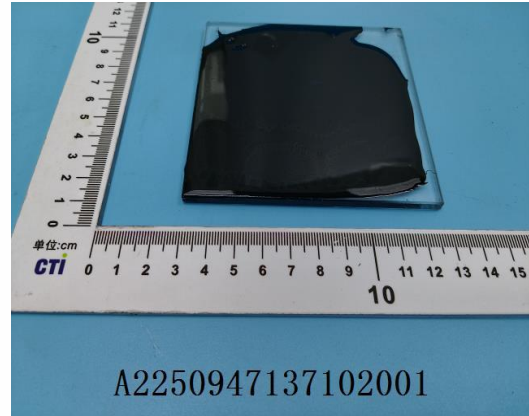
Page 10 of 10

Photo(s) of the sample(s)

Before drying



After drying



Statement:

1. This report is considered invalid without approved signature, special seal and the seal on the perforation;
2. The Company Name shown on Report and Address, the sample(s) and sample information was/were provided by the applicant who should be responsible for the authenticity which CTI hasn't verified;
3. The result(s) shown in this report refer(s) only to the sample(s) tested;
4. Unless otherwise stated, the decision rule for conformity reporting is based on Binary Statement for Simple Acceptance Rule ($w=0$) stated in ILAC-G8:09/2019 / CNAS-GL015:2022;
5. Without written approval of CTI, this report can't be reproduced except in full;
6. In case of any discrepancy between the English version and Chinese version of the reports (if generated), the Chinese version shall prevail.

*** End of Report ***