



# Test Report

Report No. A2250947137101009

Page 1 of 8

**Company Name** HUIZHOU BAISHIDACHEMICAL CO., LTD/SHENZHENPOLU CONDUCTIVE  
**shown on Report** PRINTING TECHNOLOGY CO.,LTD  
**Address** HUIZHOU CITY, HUIYANG DISTRICT, YONGHU TOWN, HONGHAI FINE  
CHEMICAL BASE, PLOT F-14-1

**The following sample(s) and sample information was/were submitted and identified by/on the behalf of the applicant**

**Sample Name** 红色、紫色油墨  
**Model No.** 体系号: PA, PBT、PD, PE, PET, PG, PIC, PIR, POLU、PR、PT, PV, RC, PA, POLU.  
型号示例: PA-1035, PA-1035(\*\*), PBT-1035, PBW-1035(\*\*), PD-1035(\*\*),  
PE-1035, PE-1035(\*\*), PET-1035, PG-1035(\*\*), PIC-1035(\*\*), PIC-1035-3,  
PIC-1035-4, PIC-1035-8, PIC-1035B, PIC-1035B(\*\*), PIC-1035B-2, PIC-1035B-3,  
PIR-1035(\*\*), POLU-1035, POLU-1035(\*\*), PR-1035, PR-1035(\*\*), PT-1035,  
PT-1035(\*\*), PV-1035, RC-1035(\*\*)  
PA-1028(\*\*), PBW-1028(\*\*), PD-1028(\*\*), PG-1028(\*\*) , PIC-1028(\*\*),  
PIC-1028-3, PIC-1028-4, PIC-1028B, PIC-1028B(\*\*), PIC-1028B-2, PIC-1028B-3,  
PR-1028, PR-1028(\*\*), PT-1028(\*\*).  
PBT-1046, PBW-1046(\*\*), PD-1046, PD-1046(\*\*), PD-1046-2, PE-1046(\*\*),  
PET-1046, PIC-1046, PIC-1046(\*\*), PIC-1046-4, PIC-1046-8, PIC-1046B,  
PIC-1046B-2, PIC-1046B-3, POLU-1046, PR-1046, PV-1046.  
PBT-1048, PBW-1048(\*\*), PD-1048(\*\*), PE-1048, PE-1048(\*\*), PET-1048,  
PIC-1048(\*\*), PIC-1048-3.PIC-1048-4, PIC-1048-8, PIC-1048B, PIC-1048B(\*\*),  
PIR-1048(\*\*), PN-1048(\*\*), POLU-1048, POLU-1048(\*\*), PR-1048, PR-1048(\*\*),  
PT-1048, PT-1048(\*\*), PV-1048.  
PBT-1026, PE-1026, PE-1026(\*\*), PET-1026, PIC-1026(\*\*), PIC-1026-8,  
PIC-1026B, PIC-1026B(\*\*), PIC-1026B-2, PR-1026, PR-1026, PR-1026(\*\*),  
PV-1026.

(备注: 括号内 “\*\*” 代表我司产品流水号)

**Color** 红色  
**Material** 油墨  
**Sample Received Date** Dec. 18, 2025  
**Testing Period** Dec. 18, 2025 to Dec. 22, 2025

**Test Requested** As specified by client, to test Lead (Pb), Cadmium (Cd), Mercury (Hg), Hexavalent Chromium (Cr(VI)), Polybrominated Biphenyls (PBBs), Polybrominated Diphenyl Ethers (PBDEs), Phthalates (DBP, BBP, DEHP, DIBP) in the submitted sample(s).

**Test Method/Test Result(s)** Please refer to the following page(s).



Wenjun Wang

Date

Dec. 22, 2025

Wenjun Wang  
Lab Authorized Signatory

No. R200822141

Centre Testing International Group Co.,Ltd. Shunde Branch  
Room 501, 902, Yongying Building, Section 2, No.8, East of Rongqi Avenue, Ronggui, Shunde  
District, Foshan, Guangdong, China

# Test Report

Report No. A2250947137101009

Page 2 of 8

\*\*\*\*\*

## Conclusion

<u>Tested Sample</u>	<u>According to standard/directive</u>	<u>Result</u>
Submitted Sample	RoHS Directive 2011/65/EU with amendment (EU) 2015/863	PASS

\*\*\*\*\*

PASS means that the results shown on the report comply with the limits set by RoHS Directive 2011/65/EU with amendment (EU) 2015/863.

# Test Report

Report No. A2250947137101009

Page 3 of 8

## Test Method

Tested Item(s)	Test Method	Measured Equipment(s)
Lead (Pb)	IEC 62321-5:2013	ICP-OES
Cadmium (Cd)	IEC 62321-5:2013	ICP-OES
Mercury (Hg)	IEC 62321-4:2013+AMD1:2017 CSV	ICP-OES
Hexavalent Chromium (Cr(VI))	IEC 62321-7-2:2017 and/or determination of Total Chromium by IEC 62321-5:2013	UV-Vis/ICP-OES
Polybrominated Biphenyls (PBBs)	IEC 62321-12:2023	GC-MS
Polybrominated Diphenyl Ethers (PBDEs)	IEC 62321-12:2023	GC-MS
Phthalates (DBP, BBP, DEHP, DIBP)	IEC 62321-12:2023	GC-MS

## Test Result(s)

Tested Item(s)	Result	MDL	Limit
	009		
Lead (Pb)	N.D.	2 mg/kg	1000 mg/kg
Cadmium (Cd)	N.D.	2 mg/kg	100 mg/kg
Mercury (Hg)	N.D.	2 mg/kg	1000 mg/kg
Hexavalent Chromium (Cr(VI))	N.D.	8 mg/kg	1000 mg/kg

Tested Item(s)	Result	MDL	Limit
	009		
<b>Polybrominated Biphenyls (PBBs)</b>			
Monobromobiphenyl	N.D.	25 mg/kg	1000 mg/kg
Dibromobiphenyl	N.D.	25 mg/kg	
Tribromobiphenyl	N.D.	25 mg/kg	
Tetrabromobiphenyl	N.D.	25 mg/kg	
Pentabromobiphenyl	N.D.	25 mg/kg	
Hexabromobiphenyl	N.D.	25 mg/kg	
Heptabromobiphenyl	N.D.	25 mg/kg	
Octabromobiphenyl	N.D.	25 mg/kg	
Nonabromobiphenyl	N.D.	25 mg/kg	
Decabromobiphenyl	N.D.	25 mg/kg	

# Test Report

Report No. A2250947137101009

Page 4 of 8

Tested Item(s)	Result	MDL	Limit
	009		
<b>Polybrominated Diphenyl Ethers (PBDEs)</b>			
Monobromodiphenyl ether	N.D.	25 mg/kg	1000 mg/kg
Dibromodiphenyl ether	N.D.	25 mg/kg	
Tribromodiphenyl ether	N.D.	25 mg/kg	
Tetrabromodiphenyl ether	N.D.	25 mg/kg	
Pentabromodiphenyl ether	N.D.	25 mg/kg	
Hexabromodiphenyl ether	N.D.	25 mg/kg	
Heptabromodiphenyl ether	N.D.	25 mg/kg	
Octabromodiphenyl ether	N.D.	25 mg/kg	
Nonabromodiphenyl ether	N.D.	25 mg/kg	
Decabromodiphenyl ether	N.D.	25 mg/kg	

Tested Item(s)	Result	MDL	Limit
	009		
<b>Phthalates (DBP, BBP, DEHP, DIBP)</b>			
Dibutyl phthalate (DBP) CAS#:84-74-2	N.D.	50 mg/kg	1000 mg/kg
Butyl benzyl phthalate (BBP) CAS#:85-68-7	N.D.	50 mg/kg	1000 mg/kg
Di-(2-ethylhexyl) phthalate (DEHP) CAS#:117-81-7	N.D.	50 mg/kg	1000 mg/kg
Diisobutyl phthalate (DIBP) CAS#:84-69-5	N.D.	50 mg/kg	1000 mg/kg

## Sample/Part Description

No.	CTI Sample ID	Description
1	009	Red liquid (dry weight)

# Test Report

Report No. A2250947137101009

Page 5 of 8

**Remark:** The sample(s) had been dissolved totally tested for Lead, Cadmium, Mercury.

The sample(s) was tested after drying for 2 hours under 105 °C.

According to the client's statement, the reasons for the multiple information in the "sample information" of this report may include (but are not limited to): supplying to different buyers, being sold to different countries or regions, former names, or mixtures of several substances.

-MDL = Method Detection Limit

-N.D. = Not Detected (<MDL)

-mg/kg = ppm = parts per million

-1000 mg/kg = 0.1%

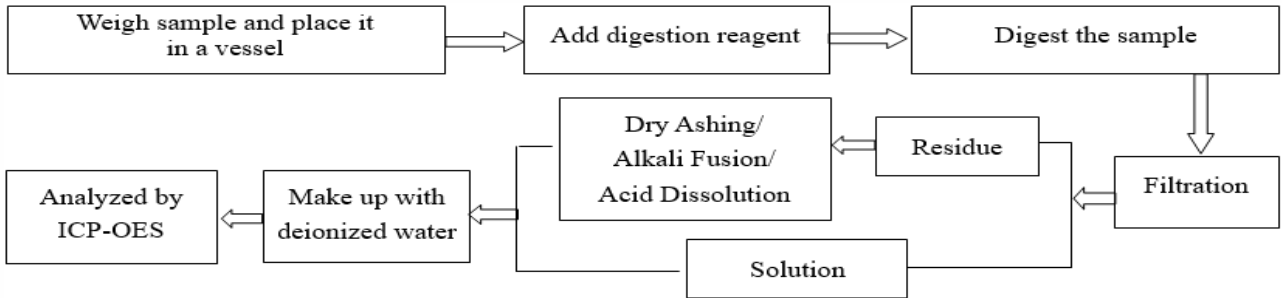
# Test Report

Report No. A2250947137101009

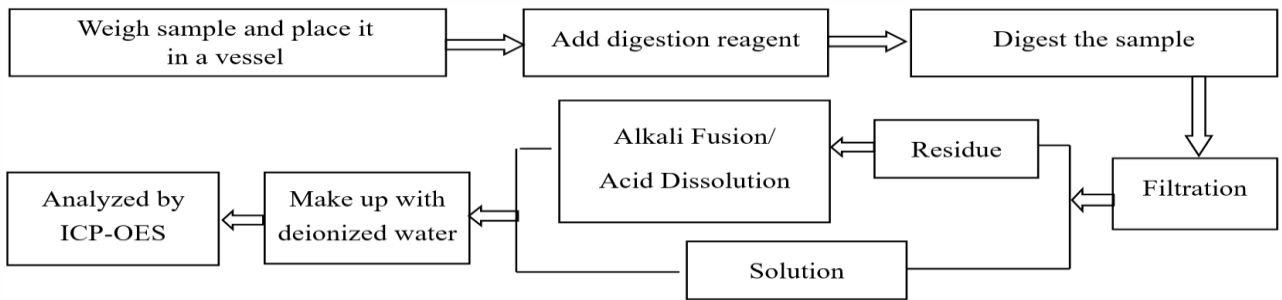
Page 6 of 8

## Test Process

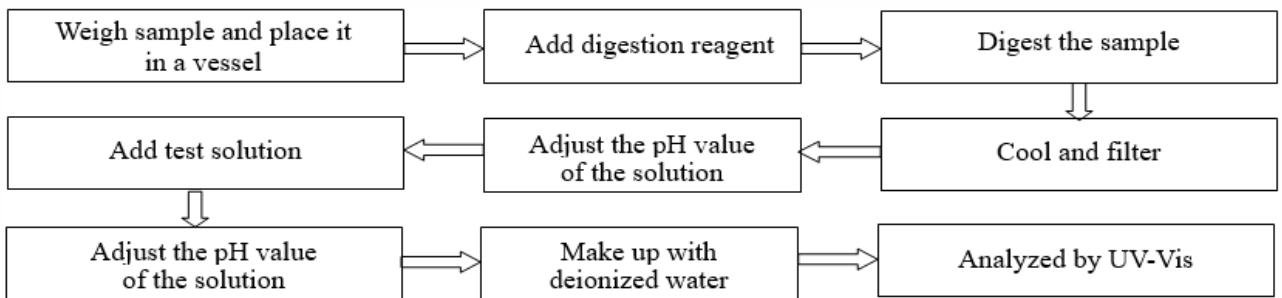
### 1. Lead (Pb), Cadmium (Cd), Chromium(Cr)



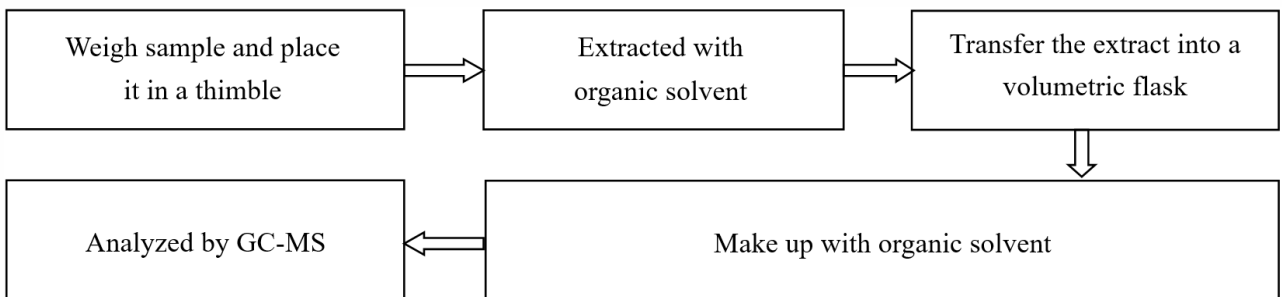
### 2. Mercury (Hg)



### 3. Hexavalent Chromium (Cr(VI))



### 4. Polybrominated Biphenyls (PBBs), Polybrominated Diphenyl Ethers (PBDEs)

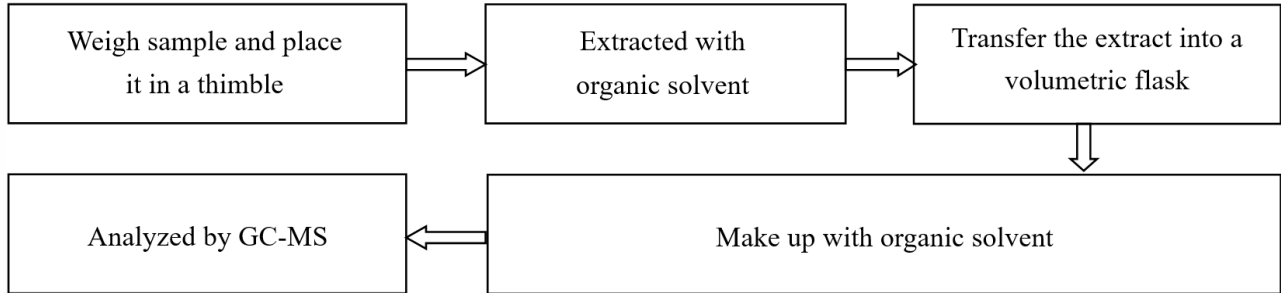


# Test Report

Report No. A2250947137101009

Page 7 of 8

## 5. Phthalates (DBP, BBP, DEHP, DIBP)



CTI 华测检测

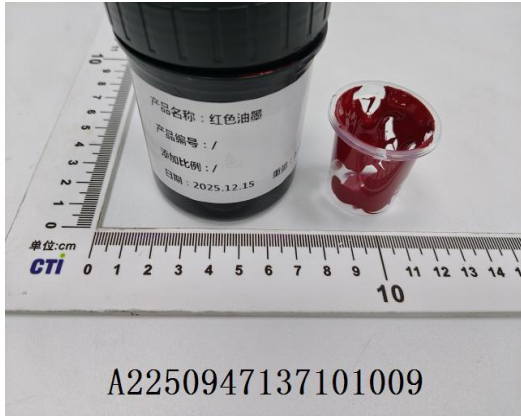
# Test Report

Report No. A2250947137101009

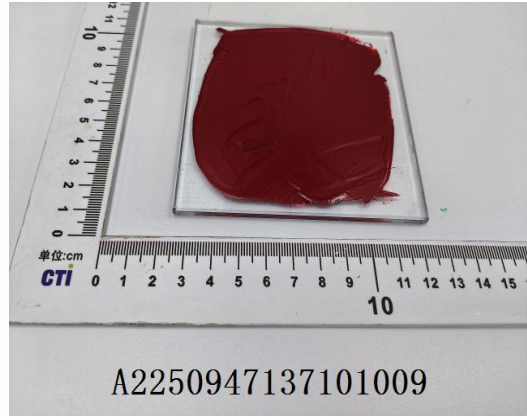
Page 8 of 8

## Photo(s) of the sample(s)

Before drying



After drying



### Statement:

1. This report is considered invalid without approved signature, special seal and the seal on the perforation;
2. The Company Name shown on Report and Address, the sample(s) and sample information was/were provided by the applicant who should be responsible for the authenticity which CTI hasn't verified;
3. The result(s) shown in this report refer(s) only to the sample(s) tested;
4. Unless otherwise stated, the decision rule for conformity reporting is based on Binary Statement for Simple Acceptance Rule ( $w=0$ ) stated in ILAC-G8:09/2019 / CNAS-GL015:2022;
5. Without written approval of CTI, this report can't be reproduced except in full;
6. In case of any discrepancy between the English version and Chinese version of the reports (if generated), the Chinese version shall prevail.

\*\*\* End of Report \*\*\*